

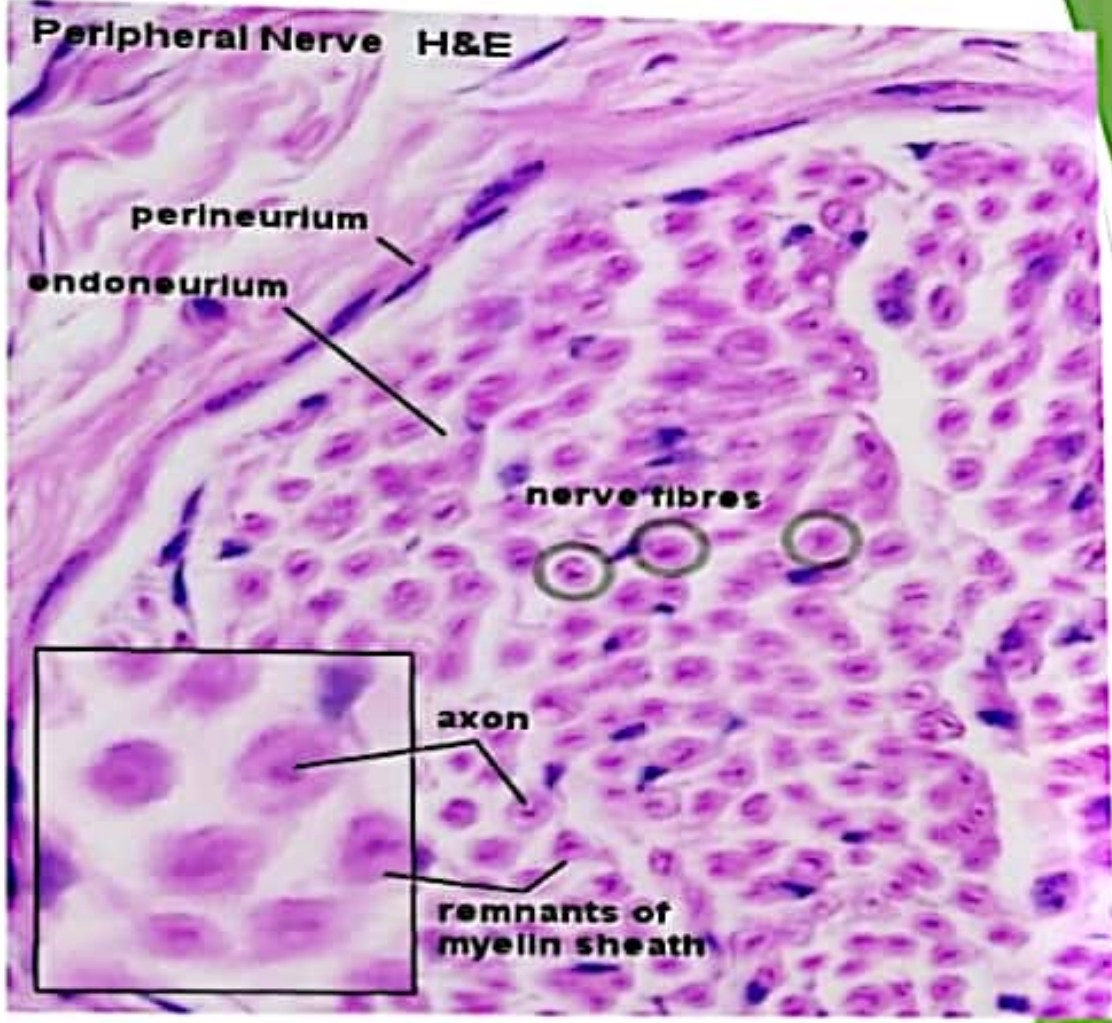
Nerves and muscles

Peripheral nerves

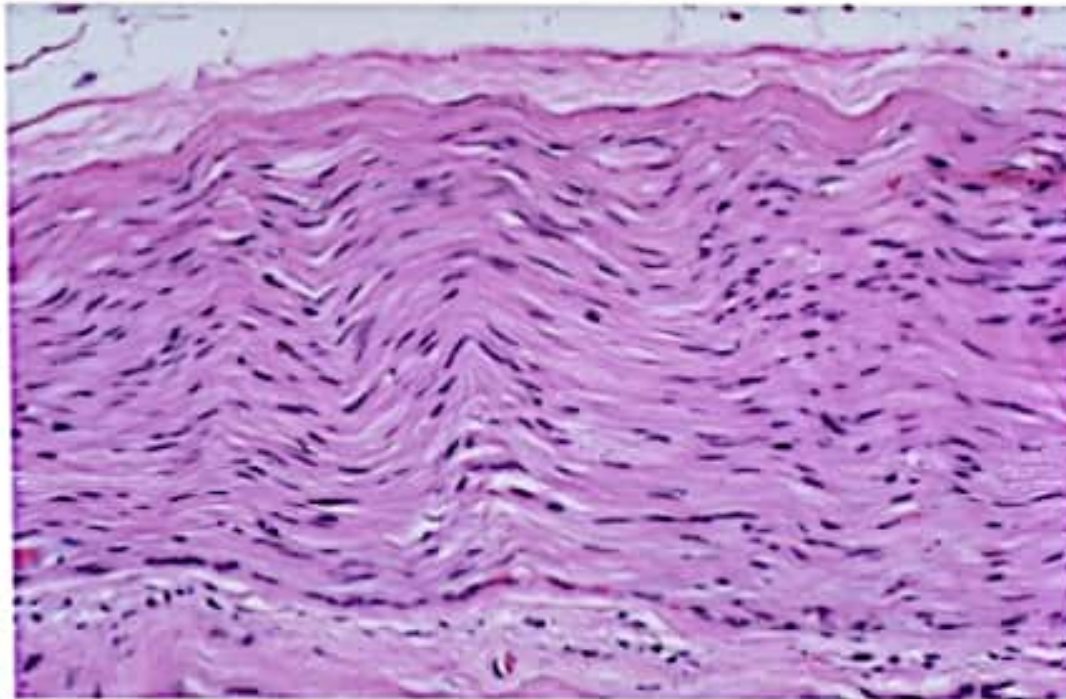
Normal nerve

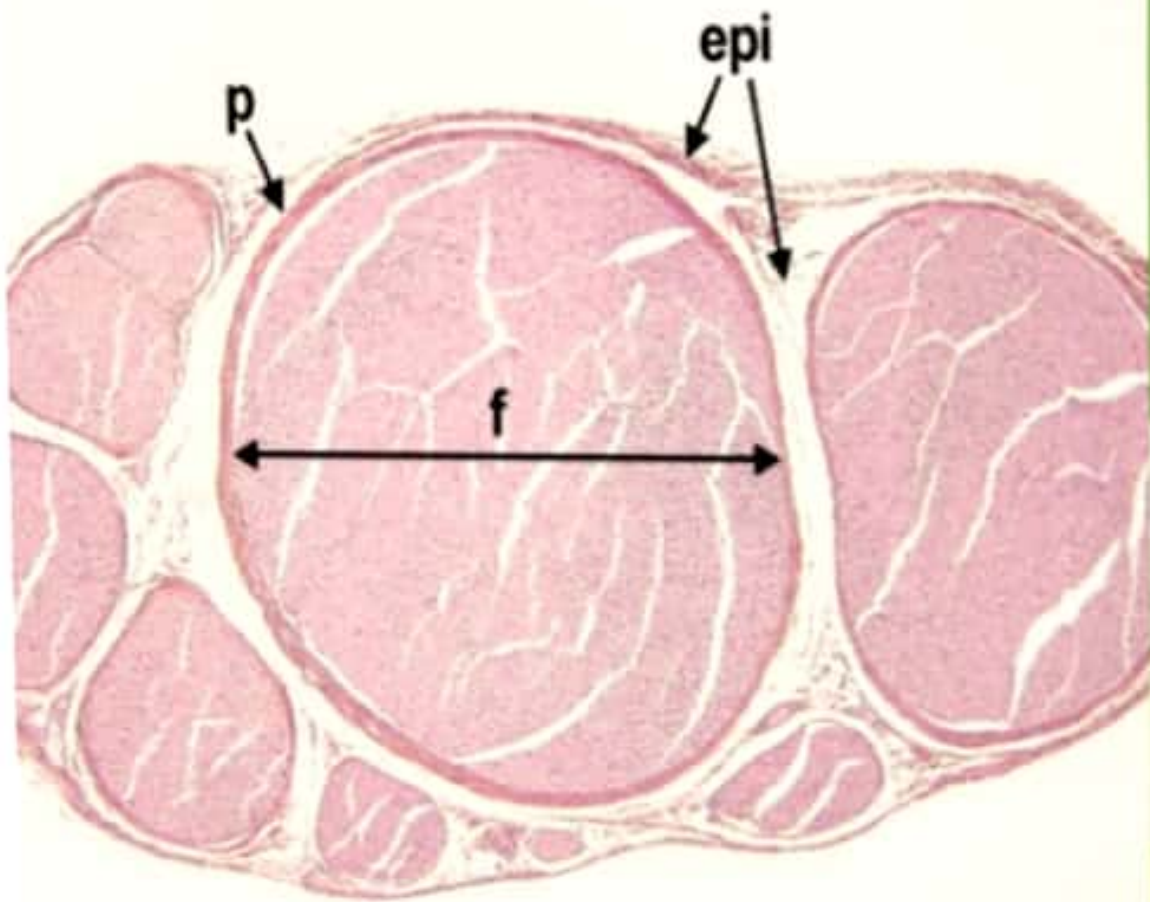
Principal structural components

- ▶ **Nerve fibre – axons, schwann cells, myelin sheath**
- ▶ **Groups of nerve fibres:- surrounded by connective tissue sheath is a fascicle.**
- ▶ **Myelinated nonmyelinated are intermingled in a fascicle.**



Longitudinal section

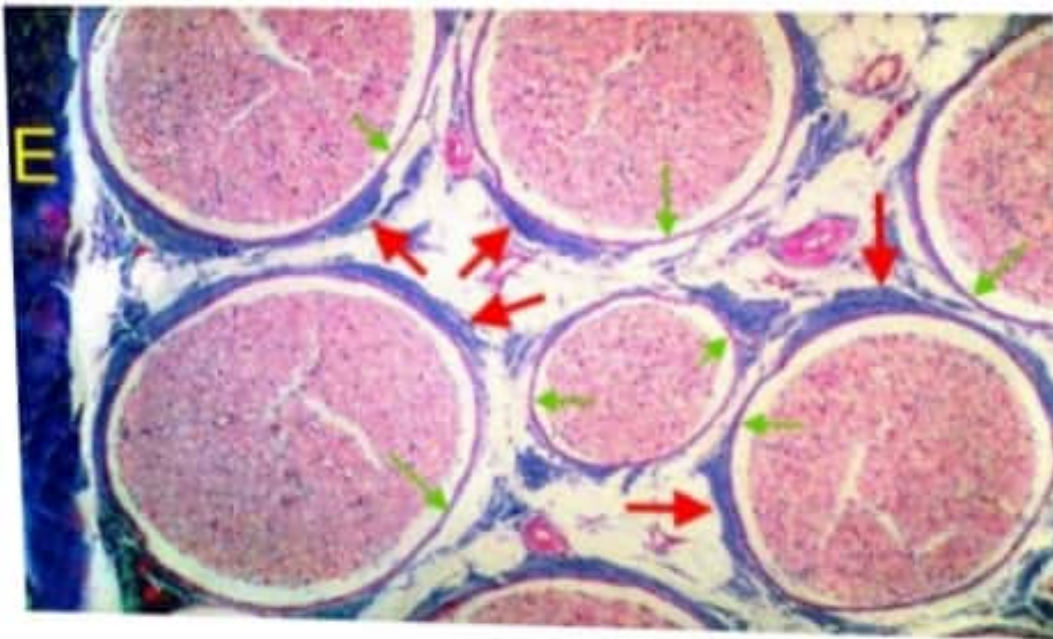




In this view of a transected equine sciatic nerve, epineurium (E) is present on the left side of the image. Fibrous perineurium (red arrows) surrounds individual nerve fascicles.

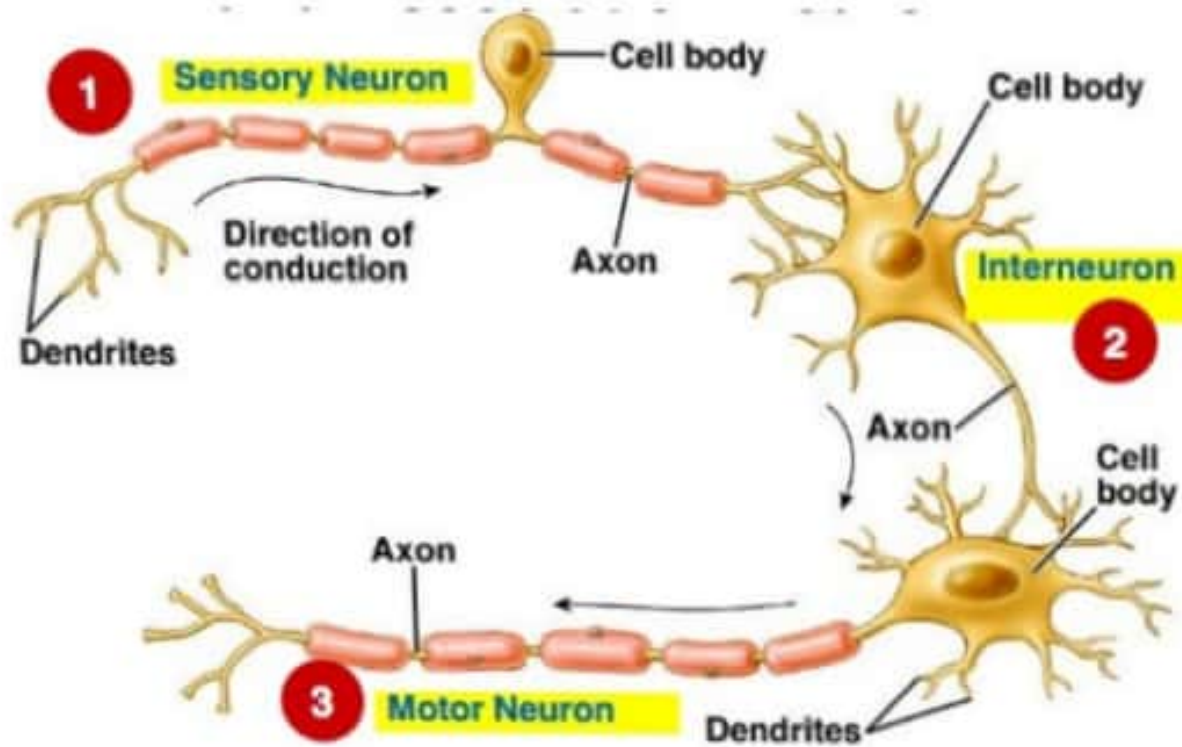
Notice perineurial epithelium (green arrows) deep to the fibrous perineurium (see Fig. 8).

The endoneurium surrounding individual myelinated fibers within the fascicle is barely visible at this magnification.



Types of neurons

Three Types of Neurons



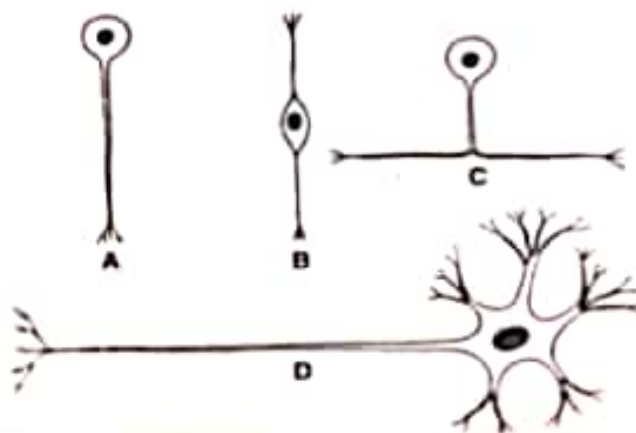


Fig. 10-1. Diagram to show different types of neurons according to their morphological features. A. unipolar neuron, B. bipolar neuron, C. pseudounipolar neuron, D. multipolar neuron.

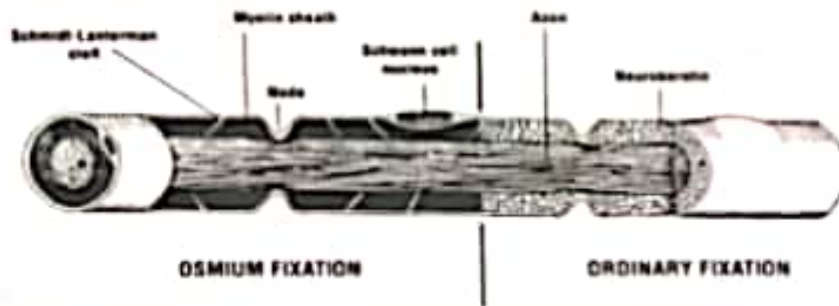


Fig. 10-2. Diagram of a myelinated nerve fiber. Note the clefts of Schmidt-Lanterman in the osmium fixed preparation and the neurokeratin network seen after ordinary fixation.

Figure 10 - Nervous Tissue

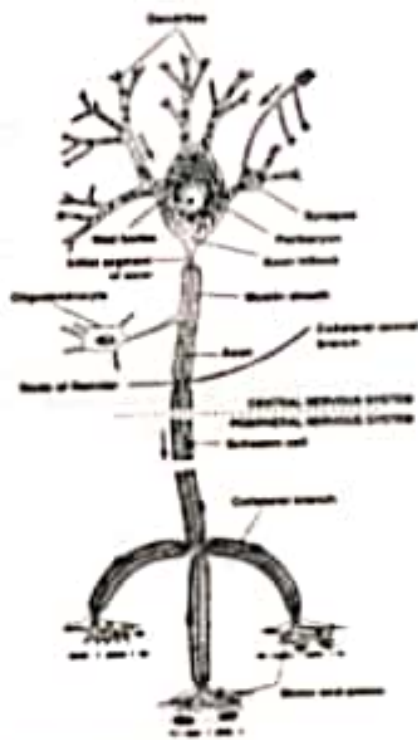


Fig 10.8. Schematic drawing of a motor neuron.